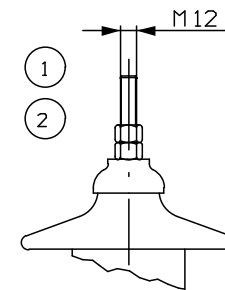



M.V. BUSHINGS



TERMINALI M.T.
M.V. TERMINALS
10kV/250A

Tipo-Type:	kVA: 1000 Hz: 50
kV.:	6 ± 2x2, 5%/10
Gruppo-group:	Dd0
Peso olio-oil weight =	700kg
Peso totale-total weight =	3700kg

PRELIMINARY DRAWING

12	Targa dati	Rating plate
11	DGPT2	DGPT2
10	Alette di raffreddamento	Cooling fins
9	Morsetti di terra	Earthing clamps
8	Complesso girevole	Sliding rollers
7	Valvola di scarico	Oil drain valve
6	Comando commutatore	Tap changer handle
5	Tappo di riempimento	Filling plug
4	Golfari di sollevamento	Lifting lugs
3	Pozzetto termometrico	Thermometer pocket
2	Isolatori MT lato 10kV	M.V. bushings 10kV side
1	Isolatori MT lato 6kV	M.V. bushings 6kV side
Pos	Denominazione	Description
OVERALL DIMENSIONS		1000kVA 6kV
Serial number -		Sheet n° 1/1
ART-TRA 		N° draw
Revision 0	Date 15/09/14	3721